

Product data sheet

Characteristics

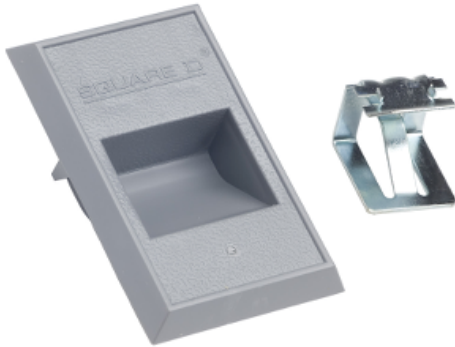
4020284450K

Load center accessory, QO/Homeline, latch kit, door

Product availability : Stock - Normally stocked in distribution facility



Price* : 15.30 USD



Main

Product Type	Door latch
Marketing Trade Name	Homeline QO

Ordering and shipping details

Category	00199 - DE5 MISC. SERVICE PARTS
Discount Schedule	DE5
GTIN	00785901700838
Nbr. of units in pkg.	1
Package weight(Lbs)	0.32 oz (9.072 g)
Returnability	Yes
Country of origin	US

Packing Units

Unit Type of Package 1	PCE
Package 1 Height	0.80 in (2.032 cm)
Package 1 width	2.00 in (5.08 cm)
Package 1 Length	2.20 in (5.588 cm)

Offer Sustainability

California proposition 65	WARNING: This product can expose you to chemicals including: Lead and lead compounds, which is known to the State of California to cause cancer and birth defects or other reproductive harm. For more information go to www.P65Warnings.ca.gov
RECh Regulation	RECh Declaration
RECh free of SVHC	Yes

* Price is "List Price" and may be subject to a trade discount – check with your local distributor or retailer for actual price.

Jul 30, 2021

EU RoHS Directive	Compliant EU RoHS Declaration
Toxic heavy metal free	Yes
Mercury free	Yes
RoHS exemption information	Yes
China RoHS Regulation	China RoHS declaration Pro-active China RoHS declaration (out of China RoHS legal scope)

Contractual warranty

Warranty	18 months
----------	-----------