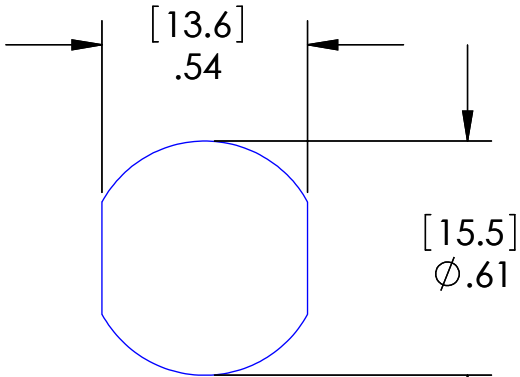
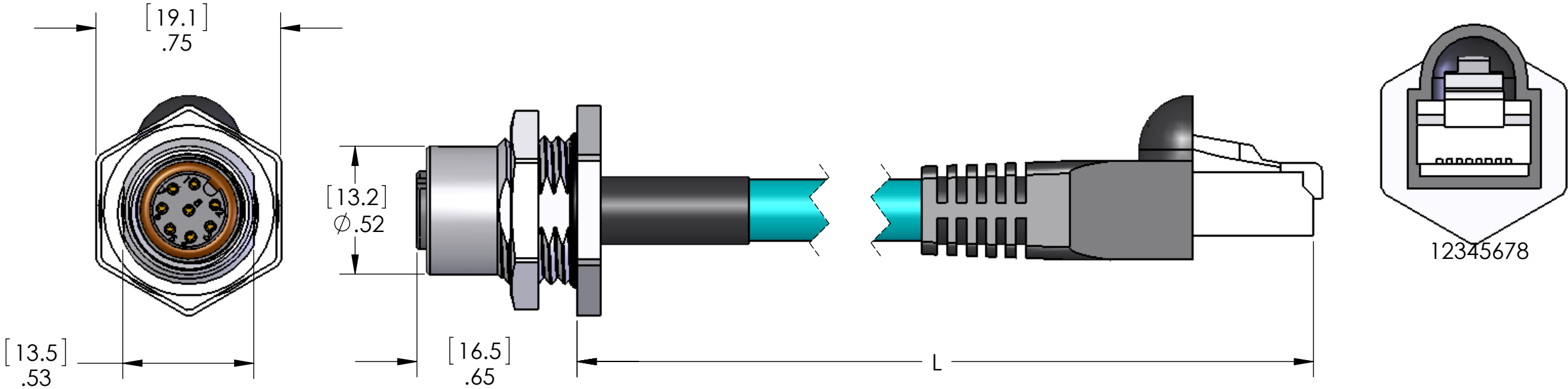


MDE45	COLOR	RJ45
PIN #		PIN #
1	WHITE/BLUE	5
2	WHITE/BROWN	7
3	BROWN	8
4	ORANGE	2
5	WHITE/GREEN	3
6	WHITE/ORANGE	1
7	BLUE	4
8	GREEN	6

REVISIONS		
REV.	DESCRIPTION	DATE
A	REDRAWN IN NEW CAD	12/2/2004



PANEL
CUTOUT

MATERIALS	
BODY:	NICKEL PLATED BRASS
INSERT:	POLYAMIDE
CONTACTS:	GOLD PLATED COPPER ALLOY
CABLE:	CAT 5E WITH BLUE PVC JACKET
O-RING:	BUNA-N
JAM NUT:	NICKEL PLATED BRASS

PROPRIETARY AND CONFIDENTIAL
THE INFORMATION CONTAINED IN THIS
DRAWING IS THE SOLE PROPERTY OF
MENCOM CORPORATION. ANY
REPRODUCTION IN PART OR AS A WHOLE
WITHOUT THE WRITTEN PERMISSION OF
MENCOM CORPORATION IS
PROHIBITED.

	60V
	1.5A
SPECIFICATIONS	

UNLESS OTHERWISE SPECIFIED: DIMENSIONS ARE IN INCHES AND [MM]		NAME
	DRAWN	BEM
	CHECKED	
	ENG APPR.	
	MFG APPR.	
MATERIAL	Q.A.	
	COMMENTS:	
FINISH		
DO NOT SCALE DRAWING		

TABLE A	
P/N	L
MDE45-8FR-RJ45-BM-0.3M	12" [0.3m]
MDE45-8FR-RJ45-BM-0.5M	19" [0.5m]
MDE45-8FR-RJ45-BM-1M	40" [1m]
MDE45-8FR-RJ45-BM-2M	79" [2m]
MDE45-8FR-RJ45-BM-3M	118" [3m]
MDE45-8FR-RJ45-BM-4M	157" [4m]
MDE45-8FR-RJ45-BM-5M	197" [5m]
MDE45-8FR-RJ45-BM-10M	393" [10m]

MENCOM CORPORATION

TITLE:

SIZE	DWG. NO.	REV
B	MDE45-8FR-RJ45-BM-ZZ	A
SCALE: 2:1	WEIGHT:	SHEET 1 OF 1