



MDC (M12) Series Receptacles

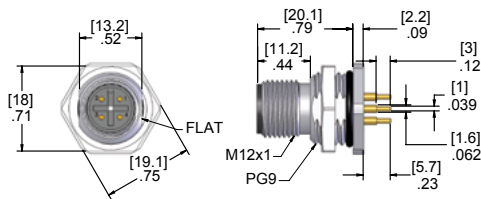
2, 4, 5 & 8 Conductor MDC Series Receptacles



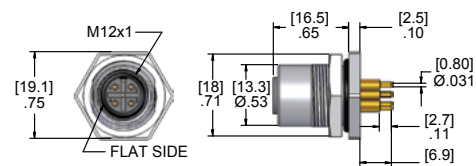
Back Mount PCB Receptacles | 300V, 4A | 60V, 1.5A | IP69/IP67 Rating

H
Micro-DC (M12) Series Receptacles

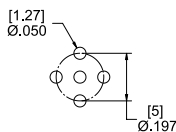
# of Poles	Male Faceview	Rating	Male Receptacles	Female Receptacles	Female Faceview
2 IP69	 M12 x 1	300V 4A	MDC-2MR-BM-PCB	MDC-2FR-BM-PCB	 M12 x 1
4 IP69	 M12 x 1	300V 4A	MDC-4MR-BM-PCB	MDC-4FR-BM-PCB	 M12 x 1
5 IP69	 M12 x 1	300V 4A	MDC-5MR-BM-PCB	MDC-5FR-BM-PCB	 M12 x 1
8 IP67	 M12 x 1	60V 1.5A	MDC-8MR-BM-PCB	MDC-8FR-BM-PCB	 M12 x 1



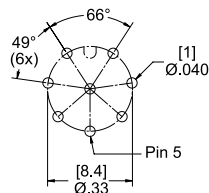
Male Receptacle



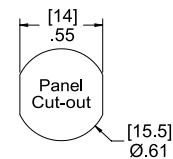
Female Receptacle



4 & 5 Pole PCB Layout



8 Pole PCB Layout



Specifications:

Shell: Nickel Plated Brass
Insulator: Polyamide
Contacts: Copper Alloy with Gold Plating

Jam Nut: Nickel Plated Brass
O-Ring: NBR
Temperature: -40°C to 105°C (-40°F to +221°F)